

Bild / Picture



Web-Managed 10-Port Mini Gigabit Switch mit 2x Gigabit SFP Slots und PoE+

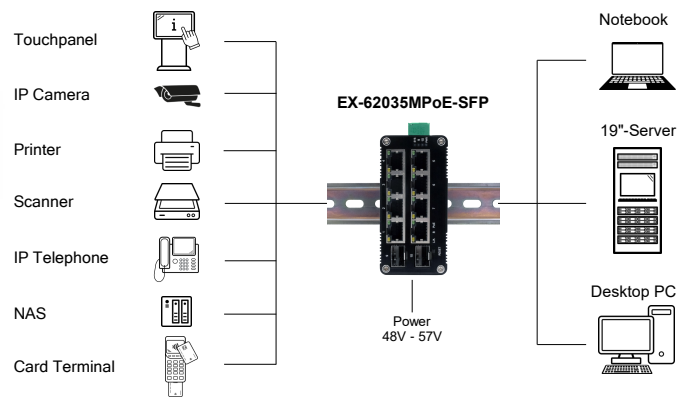
Beschreibung

Der wohl kleinste industrietaugliche 10-Port Gigabit Web-Managed PoE-Switch EX-62035MPoE-SFP bietet trotz seiner geringen Aussenmaße volle Gigabit Leistung an allen Ports. An den acht RJ45-Ports stehen jeweils bis zu 30W für den Anschluss von PoE Power Devices (PD) wie z.B. IP-Kameras oder IP-Telefone zur Verfügung. Die beiden zusätzlichen SFP-Slots ermöglichen die Einbindung in ein Glasfaser-Netzwerk. Passende SFP-Transceiver sind als Zubehör erhältlich. Dank dem robusten Metallgehäuse und dem erweiterten Betriebstemperaturbereich von -40°C bis 80°C ist er für eine Vielzahl von Anwendungen auch in rauen Umgebungen geeignet. Die Stromversorgung erfolgt über den Terminal Block (48-57VDC) und kann zur Verminderungen von Betriebsausfällen auch redundant erfolgen.

Merkmale

- 8x 10/100/1000T RJ45-Port, 2x 100/1000X SFP Slot, auto detection
- **Web-Managed:** Browserbasierter Zugriff zur einfachen Installation und Verwaltung
- Stromversorgung von bis zu 8 PoE-fähigen Remote-Netzwerkgeräten, überträgt Daten und Strom über das gleiche Kabel
- Vollständig kompatibel mit IEEE 802.3af PoE (PSE) Type 1 = 15.40W und IEEE802.3at PoE+ (PSE) Type 2 = 34.20W
- Maximale abgegebene Leistung (PD): Type 1 = 12.95W / Type 2 = 25.50W
- Konform mit IEEE 802.3af/at Power Over Ethernet (PoE), Mode/Alternative B
- Auto-MDI/MDIX macht Crossover-Kabel überflüssig
- Unterstützt Auto-Negotiation und 10/100Mbps Halb-/Voll duplex und 1000Mbps Voll duplex
- Unterstützt Jumbo Frames bis 9kBytes
- Terminal Block für redundanten DC-Eingang, 2x 48 V bis 57 VDC
- Robustes, sehr kompaktes Metallgehäuse, IP40
- Inkl. DIN-Rail Kit
- Erweiterter Betriebstemperaturbereich von -40°C bis +80°C

Anwendung / Application



Web-Managed 10-Port Mini Gigabit Switch with 2x Gigabit SFP slots and PoE+

Description

The EX-62035MPoE-SFP is probably the smallest industrial-grade 10-port Gigabit web-managed PoE switch and offers full Gigabit performance on all ports despite its small external dimensions. Up to 30W is available on each of the eight RJ45 ports for connecting PoE power devices (PD) such as IP cameras or IP telephones. The two additional SFP slots enable integration into a fibre optic network. Suitable SFP transceivers are available as accessories. Thanks to the robust metal housing and the extended operating temperature range from -40°C to 80°C, it is suitable for a variety of applications, even in harsh environments. Power is supplied via the terminal block (48-57VDC) and can also be redundant to reduce operational failures.

Features

- 8x 10/100/1000T RJ45-Port, 2x 100/1000X SFP slot, auto detection
- **Web-managed:** Browser-based access for easy installation and management
- Power up to 8 PoE-capable remote network devices, transfers data and power on one single cable
- Fully IEEE 802.3af compliant PoE (PSE) type 1 = 15.40W and IEEE802.3at PoE+ (PSE) type 2 = 34.20W
- Maximum power delivered (PD): Type 1 = 12.95W / Type 2 = 25.50W
- Compliant with IEEE 802.3af/at Power Over Ethernet (PoE), Mode/Alternative B
- Auto-MDI/MDIX eliminates the need for crossover cables
- Supports auto-negotiation and 10/100Mbps half/full duplex and 1000Mbps full duplex
- Supports jumbo frames up to 9kBytes
- Terminal block for redundant DC input, 2x 48V to 57VDC
- Rugged, very compact metal housing, IP40
- Includes DIN-Rail Kit and wall mounting bracket
- Extended operating temperature range from -40°C to +80°C

System / OS



Geprüft / Approved



Verpackung / Packaging



Spezifikation

Specification

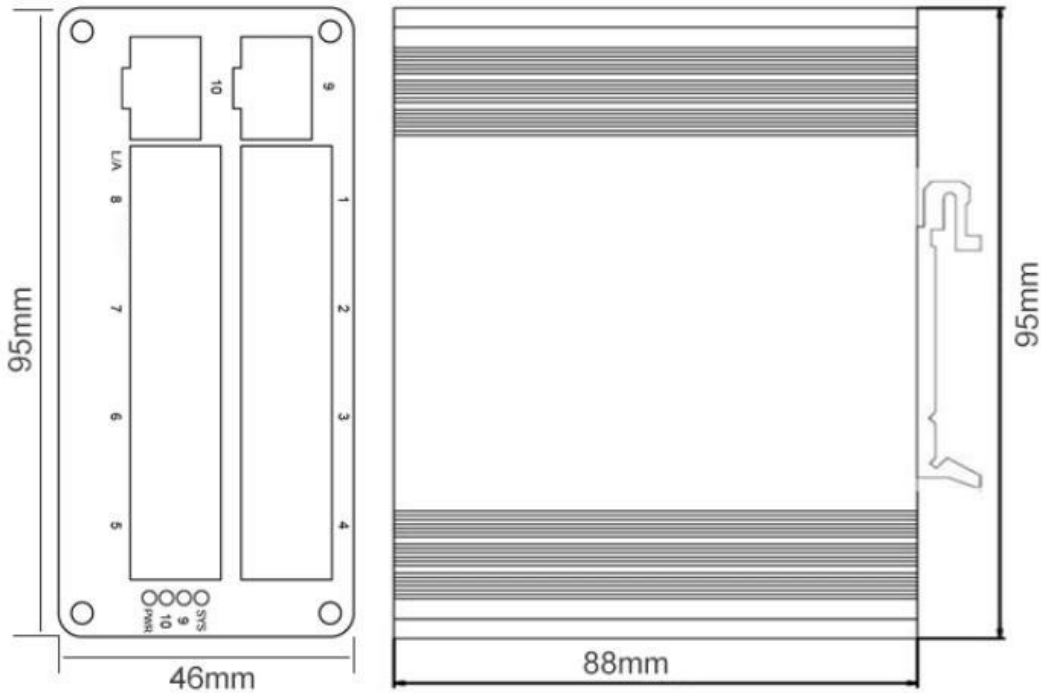
Datentransfer-Rate:	10/100/1000 Mbit/s	Data transfer rate:	10/100/1000 Mbit/s
Anschlüsse:	8x RJ45-Buchse 2x SFP-Buchse, auto detection 1x Terminal Block +48V bis +57V	Connectors:	8x RJ45 Port 2x SFP slot, auto detection 1x Terminal Block +48V to +57V
Hardwaresysteme:	Ethernet 10/100/1000Mbps, SFP 100/1000Mbps	Hardware system:	Ethernet 10/100/1000Mbps, SFP 100/1000Mbps
Betriebssysteme:	Für alle Betriebssysteme geeignet	Operating systems:	Suitable for all operating systems
Ethernet Standards	IEEE 802.3 Ethernet IEEE 802.3u Fast Ethernet IEEE 802.3ab Gigabit Ethernet IEEE 802.3x Full-Duplex Flow Control IEEE 802.3az Energy Efficient Ethernet (EEE) IEEE 802.3at Power over Ethernet Plus PSE IEEE 802.3af Power over Ethernet Plus	Ethernet Standards	IEEE 802.3 Ethernet IEEE 802.3u Fast Ethernet IEEE 802.3ab Gigabit Ethernet IEEE 802.3x Full-Duplex Flow Control IEEE 802.3az Energy Efficient Ethernet (EEE) IEEE 802.3at Power over Ethernet Plus PSE IEEE 802.3af Power over Ethernet Plus
Forward & Filtering Rate:	14'880 pps (10Mbps) 148'800 pps (100Mbps) 1'488'000 pps (1000Mbps)	Forward & Filtering Rate:	14'880pps (10Mbps) 148'800pps (100Mbps) 1'488'000pps (1000Mbps)
Paketpuffer:	2.75 Mbits	Packet Buffer:	2.75Mbits
Paketlänge:	9216 bytes	Packet Length:	9216bytes
MAC-Adresstabelle:	4000 Einträge	MAC Address Table:	4000 entries
Switching Fabric:	10 Gbps/non-blocking	Switching Fabric:	10Gbps/non-blocking
Backplane Bandbreite:	20 Gbps	Backplane bandwidth:	20Gbps
Paket-Weiterleitungsrate:	14.88 Mpps	Packet forwarding rate:	14.88Mpps
Power Pin Belegung:	4/5(+), 7/8(-) , Mode / Alternative B	Power Pin Assignment:	4/5(+), 7/8(-) , Mode / Alternative B
PoE-Budget:	240 W (30 W pro Port)	PoE Budget:	240W (30W per port)
MTBF:	> 200'000 Stunden	MTBF:	> 200'000 hrs
Zulassungen:	ISO9001 EN55022:2010+AC: 2011, Class A EN 61000-3-2: 2006+A1: 2009+A2: 2009 EN 61000-3-3: 2013 EN55024:2010 IEC 61000-4-2: 2008 (ESD) IEC 61000-4-3: 2010 (RS) IEC 61000-4-4: 2012 (EFT) IEC 61000-4-5: 2014 (Überspannung) IEC 61000-4-6: 2013 (CS) IEC 61000-4-8: 2009 (PFMF)	Regulatory Approvals:	ISO9001 EN55022:2010+AC: 2011, Class A EN 61000-3-2: 2006+A1: 2009+A2: 2009 EN 61000-3-3: 2013 EN55024:2010 IEC 61000-4-2: 2008 (ESD) IEC 61000-4-3: 2010 (RS) IEC 61000-4-4: 2012 (EFT) IEC 61000-4-5: 2014 (Surge) IEC 61000-4-6: 2013 (CS) IEC 61000-4-8: 2009 (PFMF)
Betriebstemperatur :	-40°C bis +80°C Celsius	Operating temperature :	-40°F up to 176°F
Lagertemperatur:	-40°C bis +85°C Celsius	Storage temperature:	-40°F up to 185°F
Rel. Luftfeuchtigkeit:	5% bis 95%	Rel. Humidity:	5% to 95%
Schutzklasse:	IP 40	Protection class:	IP 40
Stromversorgung:	2x +48V bis +57V (Terminal Block), redundant	Power Supply:	2x +48V to +57V (Terminal Block), redundant
Leistungsaufnahme:	<5 W (bei PoE-Verwendung: <240 W)	Power Consumption:	<5W (PoE in use: <240W)
Abmessung:	95.00 x 79.00 x 46.00 mm	Size:	95.00 x 79.00 x 46.00 mm
Gewicht:	280 g	Weight:	280 g
EAN:	4718359620324	EAN:	4718359620324
Ursprungsland:	China	Country of origin:	China
Lieferumfang:	EX-62035MPoE-SFP, DIN-Rail Kit (vormontiert), Handbuch	Packaging contents:	EX-62035MPoE-SFP, DIN-Rail Kit (pre-assembled), Manual

Verwaltung

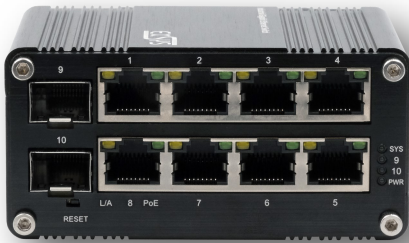
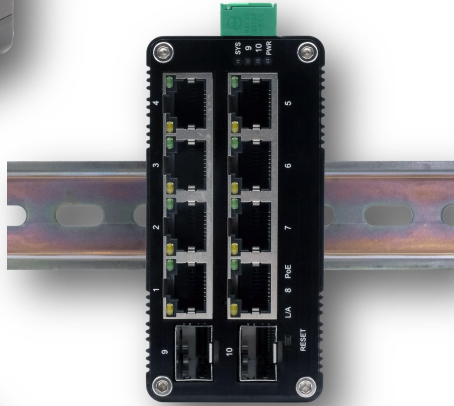
Management

Verwaltungsfunktion:	Web	Management Function:	Web
Redundanzprotokolle:	STP/RSTP	Redundancy Protocols:	STP/RSTP
Multicast-Unterstützung:	IGMP Snooping V1/V2/V3	Multicast Support:	IGMP Snooping V1/V2/V3
VLAN:	IEEE 802.1Q 4K VLAN	VLAN:	IEEE 802.1Q 4K VLAN
QOS:	Port 1Q ACL DSCP CVLAN SVLAN DA SA Port Priority Queue Weight	QOS:	Port 1Q ACL DSCP CVLAN SVLAN DA SA Port Priority Queue Weight
Diagnostische Wartung:	Port Mirroring Syslog Ping	Diagnostic Maintenance:	Port Mirroring Syslog Ping
Sicherheit:	Broadcast/Multicast Storm Protection MAC Filtering MAC Restriction	Security:	Broadcast/Multicast Storm Protection MAC Filtering MAC Restriction

Maße / Dimension



Bilder / Pictures



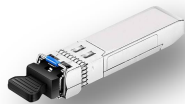
Zubehör / Accessories

EX-SFP-0055	SFP Transceiver	Duplex LC	Multimode	550/330 m	Operating Temperature: -40°C - +85°C
EX-SFP-2000	SFP Transceiver	Duplex LC	Singlemode	20 km	Operating Temperature: -40°C - +85°C
EX-6945	Netzteil / Power Supply	SDR-120-48	Output: DC 48V/2.5A/120W	Input: 85V - 264VAC	Operating Temperature: -25°C - +70°C
EX-6976	Netzteil / Power Supply	NDR-240-48	Output: DC 48V/5A/240W	Input: 85V - 264VAC	Operating Temperature: -20°C - +70°C
EX-K1110	Kabel / cable DC-Jack to Terminal Block				

EX-SFP-0055



EX-SFP-2000



EX-6945



EX-6976



EX-K1110

